

Manufacturer of Stainless Steel Wires

An ISO9001 : 2015 Certified Company

*Innovation*  
beyond convenience



# About Us

Prasum Metals Pvt. Ltd. is a professionally managed, fast-emerging manufacturer of stainless steel wires. We cater to the increasing worldwide demand of the products by manufacturing the materials that are corrosion resistant, sturdy and low maintenance for different types of domestic and industrial usage.

We are the leading stainless steel product manufacturers and exporters. We supply as per the dimensions and specifications of the industry, all of which are customized according to the demand of a client with excellent quality. Equipped with the integrated manufacturing facilities and a credible reputation of delivering the best quality stainless steel wires & bars. Prasum Metals Pvt. Ltd. has emerged to be one of the leading manufacturers of stainless steel products in India.

---





## VISION

We aim to be the most preferred and trusted supplier of value-added steel with the world-class quality of services and products.

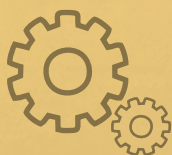
---



## COMPETITIVE

Prasum Metals Pvt. Ltd. is committed to promoting integrated responsible behaviour and value for the environmental and social well-being. Continuous improvement is focused on the development of the business. We are capable of offering a complete range of steel solutions with the philosophy of supply, source and service. Our business foundation continues to be based on customer service, quality and performance.

---



## STRESS WITH EMPHASIZING

Our plant is spread across an area of 7 Acres, with developed area of 75000 sq.ft. in the highly industrial state of Gujarat.

Prasum, Emphasizing on innovation and is well equipped with state-of-the-art technology and machinery to manufacture Stainless Steel Wires and Bars.

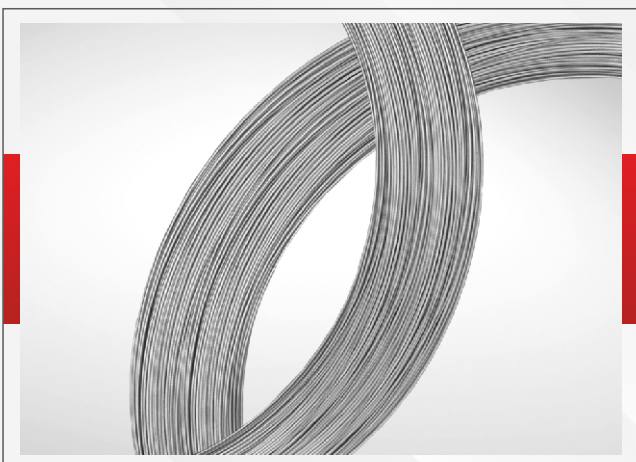
We have an in-house Wire Rod Solution Annealing, Wire Rod pickling, Baking, Drawing, Annealing, Straightening, Cutting and polishing facilities with an installed capacity of 5000 M.T. per annum.



# PRODUCTS

## STAINLESS STEEL WIRES

Prasum Metals Pvt. Ltd. is an expert in the processing and supply of stainless steel wire. They can be customized in terms of strength, sizes, grade and diameter as per the requirement of a customer. The final product is of the highest quality meeting the industry standards and expectations.



### GENERAL PURPOSE WIRES

Prasum Manufacturers Various Grades in Wide Diameter Range for Different Applications.

Grades	: AISI 200, 300, 400 Series Stainless Steel, Nickel Alloy & Duplex Steel
Size Range	: 0.10mm to 18.00mm (0.003" to 0.70")
Surface Finish	: Matte OR Bright
Supply Condition	: Soft Annealed, ¼ hard, ½ hard, ¾ hard, full hard.



### FINE WIRES

Stainless Steel Fine Wire Suitable for Weaving/ Braiding and Knitting Purpose.

Grades	: AISI 304, 304L, 316, 316L, 316Ti, 310, 321, 314 Etc.
Size	: 0.100mm to 0.800mm
Spool Size	: DIN 100, 125, 160, 200, 250, 355, PT-15, PT-25 etc.
Surface Finish	: Bright Annealed / Bright Drawn
Weight	: 1/3-4/5-6/10-12/20-22/ 35-40/15/25 Kgs.





COLD HEADING WIRES

It is the wire best for cold heading and fastener applications like nuts, bolts, rivets, screws, nails, etc. Our product is made by selecting quality rods and a special heat-treatment process. It enables the wire production of the desired surface and micro-structure necessary for superior products.

- Grades

: AISI 304, 304L, 304HC, 304Cu2, 302HQ, XM7, 304J3s, 316, 316L, 316LCu, 430 Etc.
- Size

: 0.70mm to 18.00mm
- Surface Finish

: Soft Annealed / Skin Pass Powder Coated / Bright Drawn / Bright Soft
- Packing

: Stretch + HDPE Wrapped Coils with Customised Packing Solution Also Available.
- Coating

: We are using coating salts and drawing lubricants of European Origin which are hazardous free.



REDRAW WIRES

Prasum Metals can supply Stainless Steel Wires for further redrawing to Super Fine, Fine and Medium Wires.

- Grades

: AISI 301, 302, 304, 304L, 316, 316L, 316Ti, 314, 321, 310, 430L Etc.
- Size

: 0.70mm to 5.00mm
- Surface Finish

: Soft Annealed Matte Finish (Clean)

## STAINLESS STEEL WIRES



### LASHING WIRES

Prasum Metals Produces Excellent Quality Stainless Steel Lashing Wire with special uniform annealing process to get the fine grain structure throughout the wire length.

We can supply uniformly Wax Coated as well as Uncoated Wires in AISI 302/304/304L/316/316L/430 Etc. Grades.

Each coil is manufactured with precise machines and strict quality control and we can offer customised coil weights and packing solutions as per customer's requirement.



### SPRING WIRES

Prasum Metals Pvt. Ltd. spring wire is manufactured with excellent properties for uniformity in forming spring. Our wire is processed under strict quality control with close adherence to the helix, cast, bend and wrap test of the wire and suitable surface finish.

**Grades** : AISI 302, 304, 316 Etc.

**Size** : 0.10mm & Above.

**Surface Finish** : Bright/Soap Coated



### EPQ WIRES

Prasum Metals can supply Electro Polish (EPQ) Quality Wire with excellent bright finish for Baskets, Trays, Kitchen Appliances and formed parts in AISI 304/304L/316/316L/204Cu Etc.

We supply wires with 1/4th Hard Temper and Cold Drawn Finish.



## STAINLESS STEEL WIRES

### VINEYARD WIRES

Prasum Metals can supply Stainless Steel Vineyard Wire in Grades AISI 304/304L/201Cu/204Cu Etc. to use in Vineyard for holding grapes with  $\frac{1}{4}$  Hard OR  $\frac{1}{2}$  Hard in Bright Cold Drawn Finish with Fixed Coils of 25Kgs OR on Spools as per requirement.

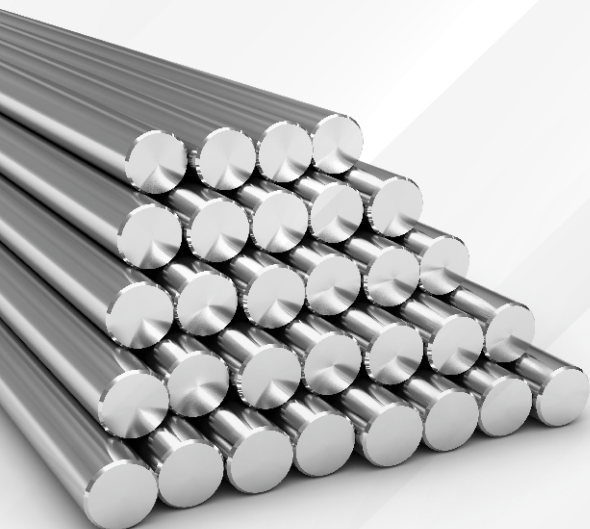
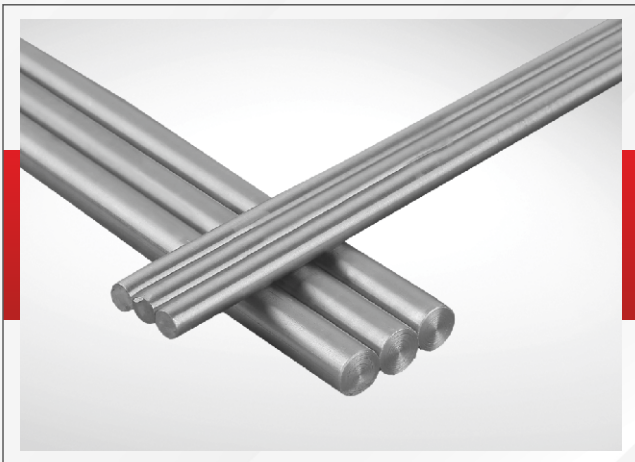


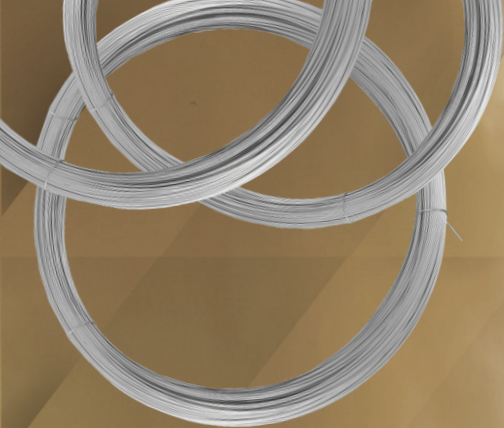
## STAINLESS STEEL BRIGHT BARS

We are the producers for a wide range of stainless steel bars which are available in different specification. Our range finds usage in various industrial applications. These are appreciated for dimensional accuracy, optimum strength, and perfect finish.

Grades	: AISI 200, 300, 400 Series
Size Range	: 1.20mm to 14.00mm (0.047" to 0.55")
Surface Finish	: Bright Polished / Bright Chamfered & Polished
Cut Length	: Upto 6000mm
Packing	: Stretch + HDPE OR Jute Wrapped 50/100/500/ 1000Kgs Bundles. These bundles further stuffed in Wooden Boxes as per customer's requirement.

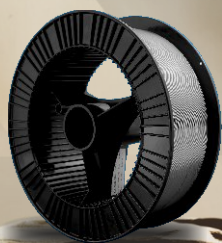
Customised Cut Length & Packing also available as per customer's requirement.





# SAFE & **STRONG**

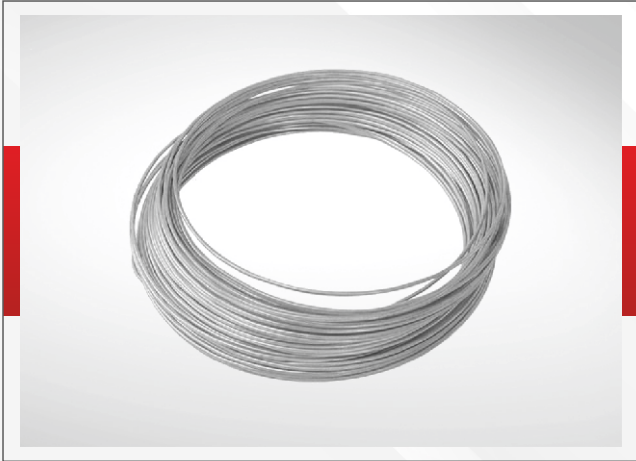
The choice of a LIFE TIME







## STAINLESS STEEL WELDING WIRES



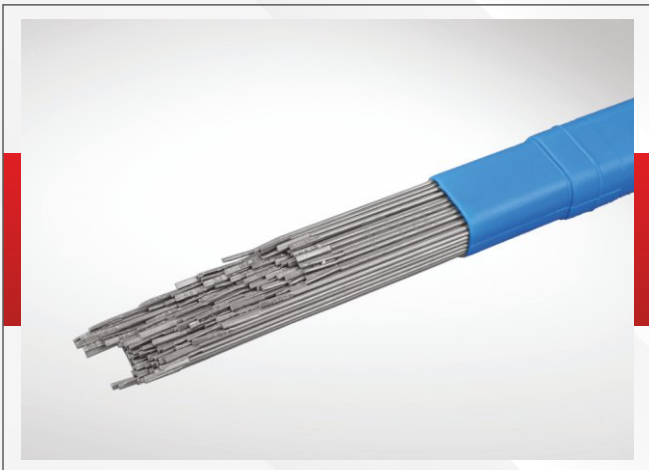
### CORE WIRES

Our core wires are produced in different grades and in cut lengths or in the form of a coil as per the need of a customer. We also do the customizations of the packing, lengths, and packaging as per the need.

**Grades** : AISI 304L, 316L, ER307Si, ER308L, ER308Lsi, ER309L, ER309Lsi, ER316L, ER316Lsi, ER310, ER347, ER317L, ER312, ER2209, 430L, ER430L Etc..

**Size** : 1.60 mm to 5.00 mm (0.062" to 0.19")

**Surface Finish** : Bright OR Matte



### TIG WIRES

Do you have your TIG welding torch and welder ready? If this is the thing, you would require beginning working is the TIG welding rod. As the oldest and reputed stainless steel manufacturer in India, we offer different sizes and grades.

**Grades** : AISI 304L, 316L, ER307Si, ER308L, ER308Lsi, ER309L, ER309Lsi, ER316L, ER316Lsi, ER310, ER347, ER317L, ER312, ER2209, 430L, ER430L Etc..

**Size** : 1.00 mm to 5.00 mm (0.040" to 0.19")

**Surface Finish** : Bright

**Cut Length** : 36" & 1000mm

**Packing** : 5 kgs / 10 lbs Corrugated Tubes & Plastic Tubes

We offer customised packing and labelling as per customer's requirement.



### MIG WIRES

Our MIG filler wire is designed for automatic or robotic welding operations. Increased productivity rather than the downtime is possible if you use our MIG wire. You should only expect the best from us.

**Grades** : AISI 304L, 316L, ER307Si, ER308L, ER308Lsi, ER309L, ER309Lsi, ER316L, ER316Lsi, ER310, ER347, ER317L, ER312, ER2209, 430L, ER430L Etc..

**Size** : 0.60 mm to 1.60 mm (0.025" to 0.062")

**Surface Finish** : Matte OR Bright

**Spools** : SD 100 / SD 200 / SD 300 & BS 300 (Basket Spool)

**Packing** : 5 kgs / 10 lbs Corrugated Tubes & Plastic Tubes

We believe we are going to facilitate in our endeavour to maintain continuity of supply to our existing customers and develop newer links.



### SAW WIRES

Prasum manufactures superior quality clean and layer wound wire for Submerged Arc welding from 1.60mm to 5.00mm (0.062" to 0.187") in various Stainless Steel Grades in Bright as well as Matte Finish.

The wire tensile strength, cast, helix and winding with precision to ensure perfect pay off.



## CHEMICAL & COMPOSITION

Type		C	Mn	Si	S	P	Cr	Ni	Cu	Mo	N	Ti	Equivalent International Standards					
Grade		Max	Max	Max	Max	Max					Max							
		%	%	%	%	%	%	%	%	%	%	%		W. Nr.	JIS	BSI	AFNOR	UNI
201Cu		0.15	6.50-9.00	1.00	0.030	0.100	13.0-15.0	Min 1.00	0.75	-	-	-	-	-	-	-	-	-
204Cu		0.15	6.50-9.00	1.00	0.030	0.100	14.0-17.0	1.50-3.00	1.80-3.00	-	-	-	-	-	-	-	-	-
204Cu		0.15	6.50-9.00	1.00	0.030	0.100	15.5-17.0	1.80-3.00	2.00-3.00	-	-	-	-	-	-	-	-	-
201 (3%Ni)		0.15	7.00-9.00	1.00	0.030	0.100	14.0-17.0	3.00-4.00	1.50-2.50	-	-	-	-	-	-	-	-	-
202		0.15	7.00-10.00	1.00	0.030	0.060	17.0-19.0	4.00-6.00	-	-	-	-	-	-	-	-	-	-
301		0.12	2.00	1.00	0.30	0.045	16.0-18.0	6.0-8.0	-	-	-	-	-	1.4310	-	-	-	-
302		0.15	2.00	1.00	0.30	0.045	17.0-19.0	8.0-10.0	-	-	-	-	-	1.4319	SUS302	302S17	Z12CN17-07	X12CrNiSi1809
302HQ		0.03	2.00	1.00	0.30	0.045	17.0-19.0	9.0-11.0	3.0-4.0	-	-	-	-	1.4567	-	394S17	Z2CN418-10	-
XM7		0.03	2.00	1.00	0.30	0.045	17.0-19.0	8.0-10.0	3.0-4.0	-	-	-	-	-	-	-	-	-
303		0.08	2.00	1.00	0.15-0.35	0.045	17.0-19.0	8.0-10.0	-	-	-	-	-	1.4305	SUS303	303S31	Z10CNF-18-09	X10CrNiSi1809
303Cu		0.08	2.50	1.00	0.15-0.35	0.045	17.0-19.0	8.0-10.0	1.4-3.0	-	0.10	-	-	1.4570	-	-	-	-
304		0.08	2.00	1.00	0.030	0.045	18.0-20.0	8.0-10.0	-	-	-	-	-	1.4301	SUS304	304S15	Z6CN18-09	X9CrNi1811
304HC		0.08	2.00	1.00	0.030	0.045	18.0-20.0	8.0-10.0	2.0-3.0	-	-	-	-	-	-	-	-	-
304L		0.03	2.00	1.00	0.030	0.045	17.5-19.5	8.0-10.5	-	-	0.11	-	-	1.4307	SUS304L	304S11	Z2CN18-10	X2CrNi1811
304L		0.03	2.00	1.00	0.030	0.045	18.0-20.0	10.0-12.0	-	-	-	-	-	1.4306	SUS304L	304S11	Z2CN18-10	X2CrNi1811
305		0.06	2.00	1.00	0.030	0.045	17.0-19.0	11.0-13.0	-	-	-	-	-	1.4303	-	-	-	-
3105		0.08	2.00	1.50	0.030	0.045	24.0-26.0	19.0-22.0	-	-	-	-	-	1.4845	-	-	-	-
314		0.25	2.00	1.50-3.00	0.030	0.045	23.0-26.0	19.0-22.0	-	-	-	-	-	1.4841	-	-	-	-
316		0.08	2.00	1.00	0.030	0.045	16.0-18.0	10.0-14.0	-	2.00-3.00	-	-	-	1.4401	SUS316	316S31	Z6CND17-11	X8CrNiMo1713
316L		0.03	2.00	1.00	0.030	0.045	16.0-18.0	10.0-14.0	-	2.00-3.00	-	-	-	1.4404	SUS316L	316S31	Z6CND17-12	X2CrNiMo1712
316Ti		0.08	2.00	1.00	0.030	0.045	16.0-18.0	10.0-12.0	-	2.00-3.00	-	5X%Cupto0.8	-	1.4541	-	3206311-320517	Z6CNDT17-12	X6CrNiMoTi1712
ER317L		0.03	1.00-2.50	0.30-0.65	0.030	0.030	18.0-20.50	13.0-15.0	0.75	3.00-4.00	-	-	-	-	-	-	-	-
321		0.08	2.00	1.00	0.030	0.045	17.0-19.0	9.0-13.0	-	-	-	5X%CMin.	-	1.4551	SUS31	321S31	Z6CNT18-10	X6CrNiTi1811
347		0.08	2.00	1.00	0.030	0.045	17.0-19.0	9.0-13.0	-	-	-	-	-	1.4370	-	-	-	-
ER347		0.08	2.50	0.30-0.65	0.030	0.030	19.0-21.5	9.0-11.0	0.75	-	-	-	-	1.4316	-	-	-	-
200Series																		
300Series																		



Type		C	Mn	Si	S	P	Cr	Ni	Cu	Mo	N	Ti	Equivalent International Standards				
Grade		Max	Max	Max	Max	Max											
		%	%	%	%	%	%	%	%	%	%	%	W. Nr.	JIS	BSI	AFNOR	UNI
ER307Si		0.012	6.00/7.50	0.65-0.95	0.020	0.030	17.2-19.8	8.0-9.4	0.30	0.30	-	-	1.4316	-	-	-	-
ER308		0.08	2.00	0.30-0.65	0.020	0.030	19.0-21.0	9.0-11.0	-	-	-	-	1.4316	-	-	-	-
ER308L		0.03	1.50-2.00	0.30-0.65	0.020	0.030	19.0-21.0	9.0-11.0	0.75	0.75	-	-	1.4316	-	308S92	Z2CNS20-10	-
ER308L		0.025	1.50-2.00	0.30-0.65	0.020	0.025	19.5-21.0	9.0-11.0	-	-	-	-	1.4316	-	-	-	-
ER308LSi		0.03	1.00-2.50	0.65-1.00	0.030	0.030	19.5-22.0	9.5-11.0	-	-	-	-	1.4316	-	-	-	-
ER309		0.08	1.50-2.00	0.30-0.65	0.015	0.030	23.0-25.0	9.0-11.0	-	-	-	-	1.4829	-	-	-	-
ER309L		0.03	1.50-2.00	0.30-0.65	0.015	0.030	23.0-25.0	12.0-14.0	0.75	0.75	-	-	1.4332	-	309S94	-	-
ER309LSi		0.03	1.00-2.50	0.65-1.00	0.030	0.030	23.0-25.0	12.0-14.0	-	-	-	-	1.4332	-	-	-	-
ER309LMo		0.02	1.30-2.00	0.30-0.60	0.015	0.020	21.0-22.0	14.0-16.0	0.3	-	-	-	-	-	-	-	-
ER310		0.08-0.15	1.50-2.00	0.30-0.65	0.025	0.030	25.0-28.0	20.0-22.0	-	-	-	-	1.4842	-	310S94	Z12CN25-20	-
ER312		0.15	2.00	0.30-0.65	0.025	0.025	29.0-32.0	8.0-10.0	-	-	-	-	1.4337	-	312S94	-	-
ER316		0.08	2.00	0.30-0.65	0.020	0.030	18.0-20.0	12.0-14.0	-	2.00-3.00	-	-	1.4430	-	-	-	-
ER316L		0.03	1.50-2.00	0.30-0.65	0.020	0.030	18.0-20.0	12.0-14.0	0.75	2.00-3.00	-	-	1.4430	-	316S92	Z2CN019-13	-
ER316L		0.02	1.50-2.00	0.30-0.65	0.020	0.020	18.0-20.0	12.0-14.0	0.75	2.20-3.00	-	-	1.4430	-	-	-	-
ER316LSi		0.03	1.00-2.50	0.65-1.00	0.030	0.030	18.0-20.0	11.0-14.0	-	2.00-3.00	-	-	1.4430	-	-	-	-
410		0.15	1.00	1.00	0.030	0.040	11.5-13.5	-	-	-	-	-	1.4006	-	-	-	-
416		0.15	1.00	1.00	0.15-0.30	0.040	12.0-14.0	-	-	-	-	-	1.4005	-	-	-	-
430		0.10	1.00	0.75	0.030	0.040	16.0-18.0	0.60	-	-	-	-	1.4016	SUS430	430S17	Z8C17	X8Cr17
430L		0.030	1.00	1.00	0.030	0.040	16.0-18.0	-	-	-	-	-	1.4016	-	-	-	-
430Cu		0.12	0.30-0.50	0.30-0.50	0.010	0.040	16.0-18.0	0.50max.	0.85-1.00	-	-	-	-	-	-	-	-
430F		0.12	1.25	1.00	0.150	0.060	16.0-18.0	-	-	-	-	-	-	-	-	-	-
431		0.12-0.22	1.50	1.00	0.015	0.040	15.0-17.0	1.50-2.50	-	-	-	-	1.4057	-	-	-	-
434		0.12	1.00	1.00	0.030	0.040	16.0-18.0	0.50max.	0.75max.	0.75-1.25	-	-	1.4113	-	-	-	-
2205		0.030	2.00	1.00	0.20	0.030	21.0-23.0	4.50-6.50	0.10-0.60	2.50-3.50	0.10-0.22	-	1.4662	SUS329S3L	318S13	-	-
2209		0.030	0.50-2.00	0.90	0.030	0.030	21.5-23.5	7.50-9.50	0.75	2.50-3.50	0.08-0.20	-	-	-	-	-	-
2594		0.030	2.50	1.00	0.020	0.030	24.0-27.0	8.0-10.50	1.50	2.50-4.50	0.20-0.30	-	-	-	-	-	-

# QUALITY STANDARDS & CERTIFICATIONS

**Prasum** Emphasizing on innovation and is well equipped with the state of the are machinery manned by experienced personnel to manufacture wires and bright bars confirming to various international standards.

We are committed to satisfy the expectations of the customers by manufacturing and supplying stainless steel wires, stainless steel bright bars, stainless steel CORE, TIG & MIG Welding Wires of stated quality with timely delivery and our best of the services at all times.

Prasum is ISO 9001:2015 certified company from TUV Nord Cert GmbH.





# Certificates





---

**Office:** 1st Floor, Ajanta Complex, Guest House Road, P.O.Box No. 209, Morbi - 363 641 (Gujarat) INDIA

**Works:** Morbi - Rajkot Highway, At Virpar, Morbi - 363 641, (Gujarat). INDIA

**Ph.:** +91 2822 221585 **Fct:** +91 96876 85575 **Fax:** +91 2822 221595

**Email:** [info@prasummetals.com](mailto:info@prasummetals.com) **Web:** [www.prasummetals.com](http://www.prasummetals.com)